

APPENDIX: INSTALLING AND RUNNING VSE

Before you can use VSE you have to install it. This Chapter describes how to install VSE, what gets installed, what directories are created, and presents ways to start VSE and suggestions for how to use it. The information provided in this charter describes installation of Version 9.3.0 on a Windows 2000 platform. Installation on other platforms and future versions of VSE and GSS may be different.

INSTALLING VSE

Step 1: Insert the VSE/GSS/RTG CD ROM from Prediction Systems Inc (PSI) into your CD ROM drive.

You should automatically get the installation window shown below. If not, press START, then select RUN... and type D:\Setup.exe where D: designates your CD ROM drive.

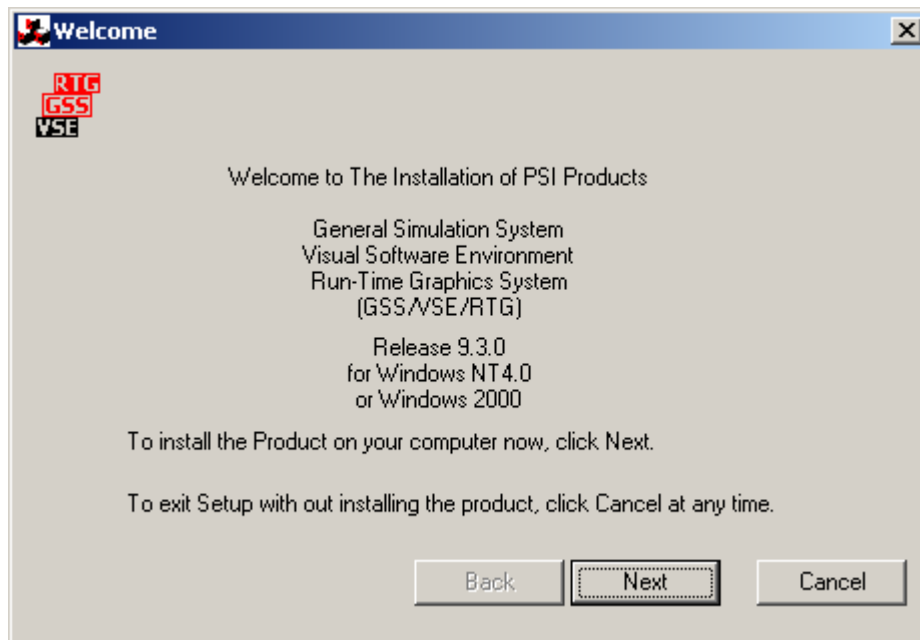


Figure 1 – VSE/GSS/RTG Install Window

Step 2: Press Next to proceed with Installation.

You will see the License Agreement window shown below. Please read all terms and conditions to continue with the installation.

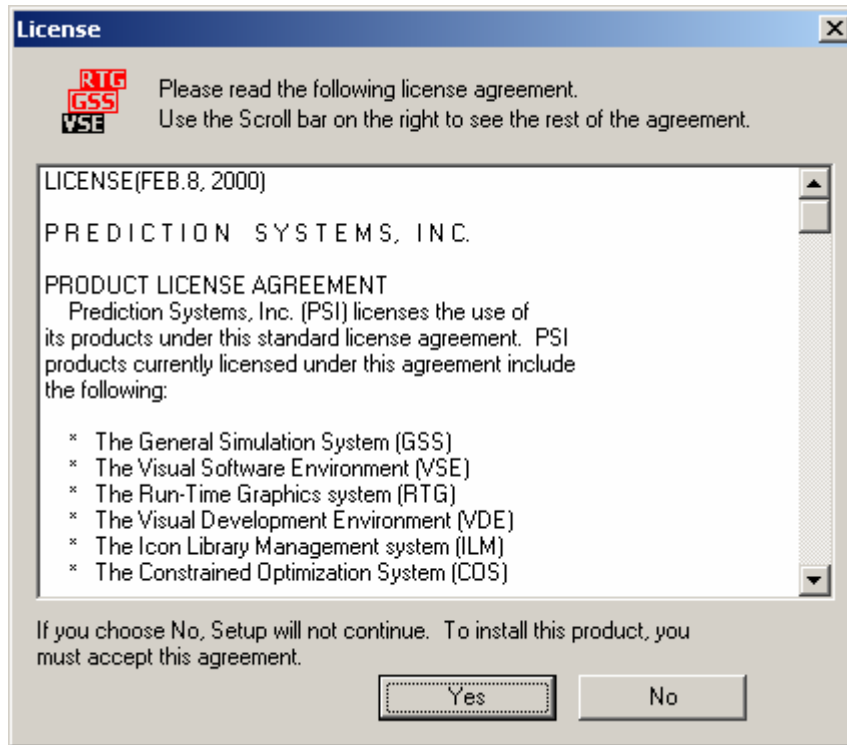


Figure 2 –Control Specification Template

✓ Note that VSE, GSS, and RTG are licensed products of Prediction Systems.

Step 3: Click Yes to agree with the terms of the agreement. You will then see the Product Licensing Window shown below:

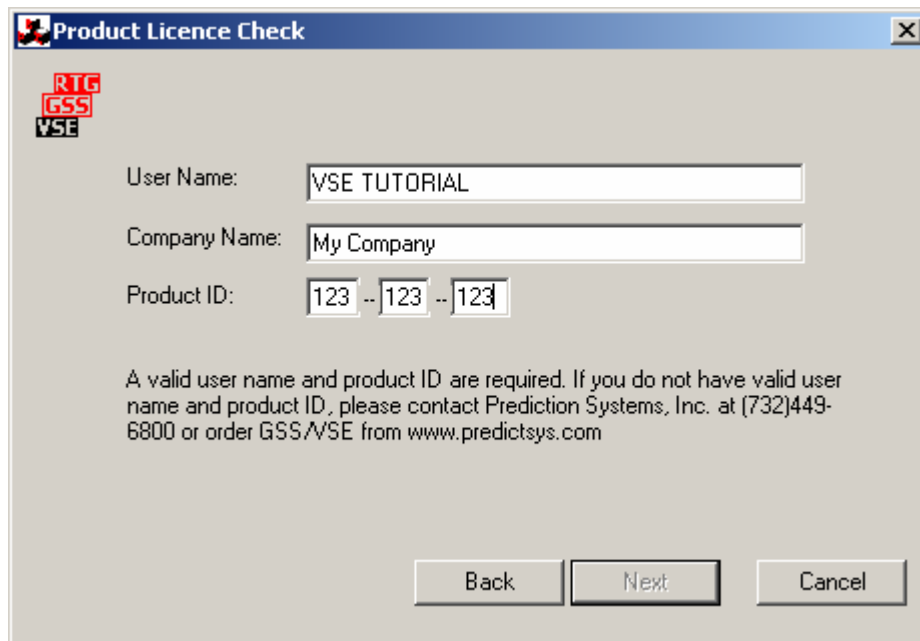


Figure 3 – Product License/Registration Window

Fill in your name as registered, your company name, and the ten-digit Product ID code that came with your CD.

Step 4: Click Next.

VSE, GSS, and RTG are now be installed on your computer. You will be prompted to re-start your machine for the installed software to become active.

Congratulations you have successfully installed VSE, GSS, and RTG from Prediction Systems, Inc.



WHAT GOT INSTALLED

PSI_Products Directory

The installation process installs VSE, GSS, and RTG software under the directory PSI_Products as follows:

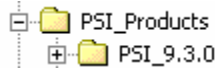



Figure 3 – VSE/GSS Directory Hierarchy

 **NOTE:** When creating VSE projects, PSI strongly suggests that you use some other directory or folder for keeping your VSE projects. Also, it is good practice to put VSE projects into separate folders.

VDE Explorer

The installation process also installs the Visual Development Environment (VDE) Explorer and puts an icon for it on your desktop as shown below:



Figure 4 – VDE Explorer Desktop Icon

The VDE Explorer provides ways to start VSE and GSS, and to create project directories for VSE and GSS. This is discussed in the next section of this Appendix.

UltraEdit-32 File Editor

On Windows platforms, VSE/GSS installs a copy of UltraEdit-32. UltraEdit-32 is licensed by PSI and is bundled with our VSE/GSS software. UltraEdit-32 is a very powerful editor that we selected for editing files. UltraEdit-32 is configured to display different VSE/GSS key words in different colors for easier comprehension and greater productivity. You can also customize UltraEdit-32 in additional ways to suite your own tastes, e.g., change font and font size. You'll get to use UltraEdit-32 a lot.

RUNNING VSE AND GSS

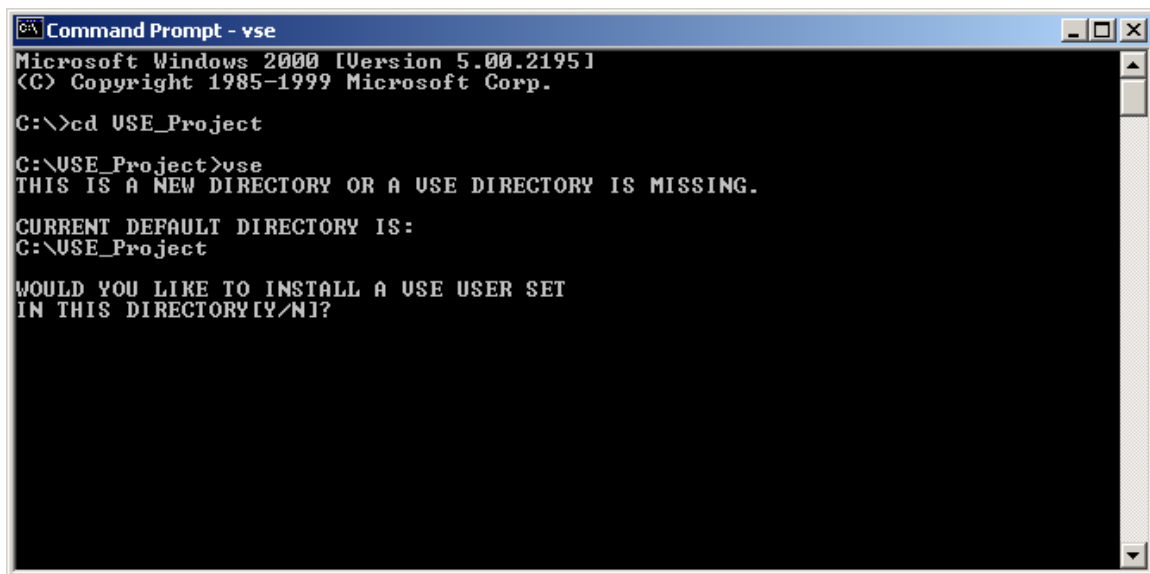
There are three ways to start VSE and GSS:

1. Open a DOS Window from the Start button and type either VSE or GSS.
2. Use the Windows Explorer to move an existing copy of VSE or GSS to another directory.
3. Use the VDE Explorer to create directories and run VSE or GSS.

Each method builds a sub-directory for required support under the directory in which VSE or GSS is started. Each method is explained in the text that follows. Which method you choose to launch VSE or GSS is a matter of personal taste and you may find that each method works best under different circumstances.

Method 1 - Running VSE or GSS from a DOS Window:

Let's say you have already created a directory called VSE_Project for keeping your VSE project. Start a DOS window and change directory to the VSE_Project directory. Then enter the command 'vse'. The VSE software will recognize that this directory requires components for it to run, and it will prompt you for installing a "VSE/GSS User Set" sub- directory. The DOS window will look similar to the one below:



```
Command Prompt - vse
Microsoft Windows 2000 [Version 5.00.2195]
(C) Copyright 1985-1999 Microsoft Corp.

C:\>cd USE_Project

C:\USE_Project>vse
THIS IS A NEW DIRECTORY OR A USE DIRECTORY IS MISSING.

CURRENT DEFAULT DIRECTORY IS:
C:\USE_Project

WOULD YOU LIKE TO INSTALL A USE USER SET
IN THIS DIRECTORY[Y/N]?
```

Figure 5– Prompt following use of the 'vse' command

If you answer with a 'Y' for Yes, a User Set for VSE and GSS will be installed as a subdirectory and VSE will start. If you had first entered 'gss' you would have seen a very similar screen and GSS would start.

Let's assume that you have run both VSE and GSS from the DOS command prompt in the VSE_Project directory. The VSE_Project directory will now look like:

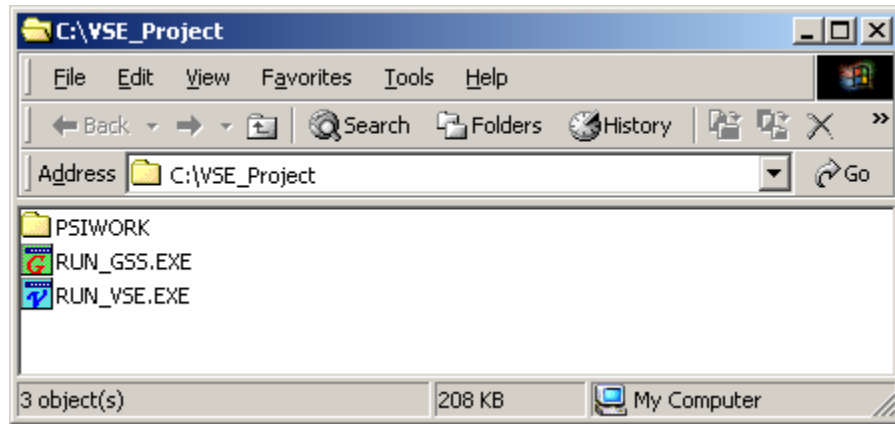




Figure 6 - Directory contents after running 'VSE' and 'GSS' commands

If you had created any software with VSE or GSS you would see additional files in VSE_Project.

 **NOTE:** The subdirectory PSIWORK is created in all directories that run VSE or GSS. PSIWORK is where all the “behind the scenes” work is kept, and there is really no need to access files within PSIWORK although you are welcome to look ☺.

 **NOTE:** You will note that entering either 'vse' or 'gss' from the DOS command prompt caused the creation of **RUN_GSS.EXE** and **RUN_VSE.EXE** in addition to the PSIWORK directory. From the Windows Explorer you can launch either VSE or GSS by clicking on the appropriate .EXE file. This is described next in Method 2.

Method 2 - Using Windows Explorer to start VSE or GSS:

As mentioned above, you can launch VSE or GSS by double clicking on RUN_VSE.EXE or RUN_GSS.EXE respectively from Windows Explorer. This assumes you have already used Method 1 at least once to launch VSE or GSS (or Method 3 below).

If you want to use VSE or GSS in another directory, which does not have the VSE/GSS User Set installed, you can drag copies of RUN_VSE.EXE or RUN_GSS.EXE to that directory, and then launch them there by double clicking on the appropriate file. You will see a DOS window appear that is very similar to Figure 5 above that will prompt you about creating a new VSE/GSS User Set in that directory.

Method 3 - Using VDE Explorer to start VSE or GSS:

As noted in the Installation section earlier, when VSE/GSS/RTG are installed, VDE Explorer is also installed on your desktop. VDE Explorer is provided as another method for creating directories for VSE and GSS projects and for launching VSE and GSS.

VDE Explorer has an appearance similar to Windows Explorer and works somewhat different. Let's assume that you have already created a directory on your C: drive called PSI_PROJECTS. Launch VDE Explorer from your Desktop by double clicking on its icon.

File Menu Item

If you click on the File menu item you will see a screen that looks like:

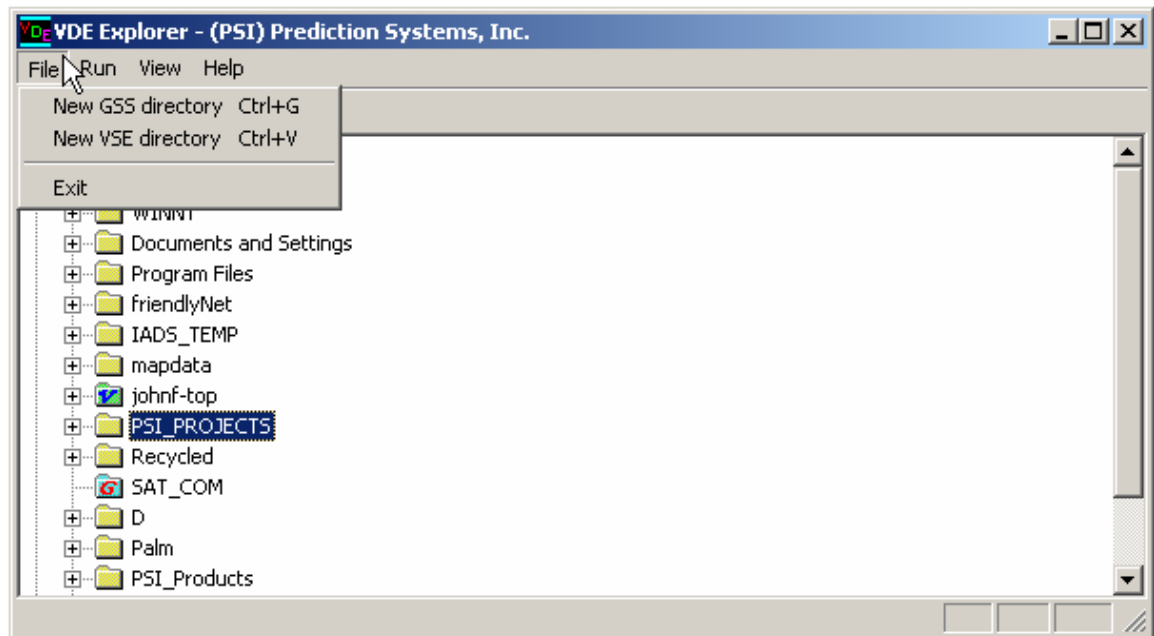





Figure 7 – VDE Explorer File Menu

This offers to create either a new GSS or VSE directory under the active directory – in this case PSI_PROJECTS. If you select either directory choice, VDE Explorer will prompt you for a subdirectory name, and will then create the new subdirectory and automatically load RUN_VSE.EXE or RUN_GSS.EXE in addition to the VSE/GSS User Set in PSIWORk.

 **NOTE:** In the VDE Explorer window, directories that already contain VSE or GSS are indicated by the file symbols  or  respectively, such as shown in Figure 7 above for directories johnf-top and SAT_COM.

Run Menu Item

The Run Menu choice on the VDE Explorer allows you to run VSE or GSS in a target directory. The window will look something like Figure 8 below.

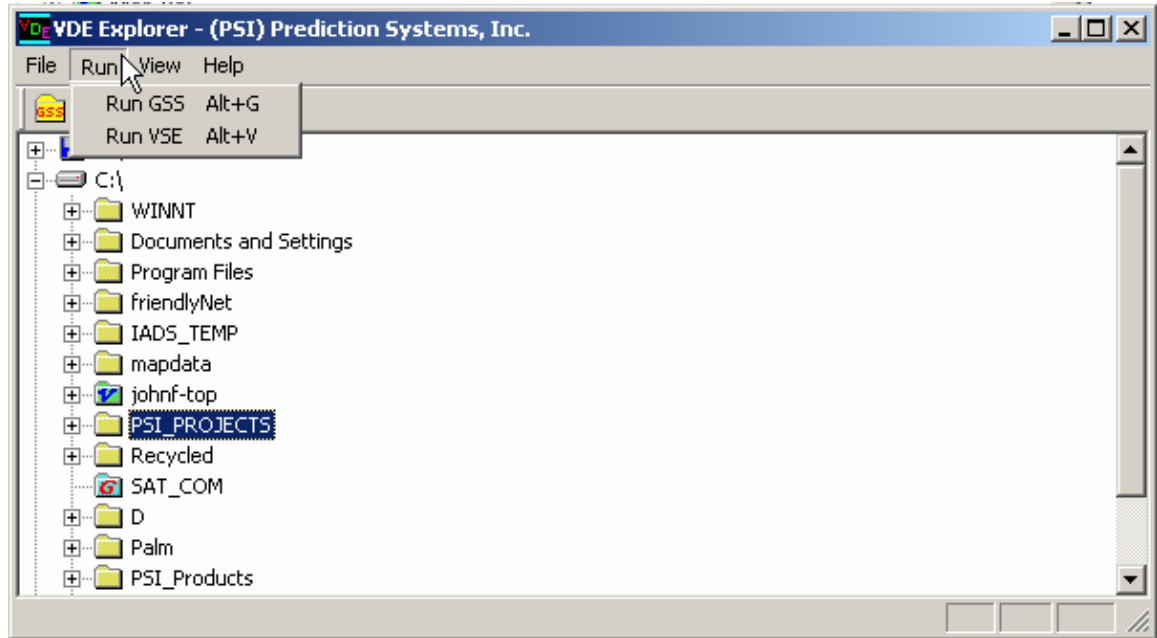


Figure 8 – VDE Explorer Run Menu for Launching VSE or GSS

Choosing either Run GSS or Run VSE will start the respective software in the active directory – in this case PSI_PROJECTS.



That's it -

Now have FUN!